



Brass Wall Flange
Cat No.
JSF-1001



Brass Wall Flange Cute
Cat No.
JSF-1002



Brass Wall Flange Square
Cat No.
JSF-1003



SS Wall Flange
Cat No.
JSF-1004



SS Wall Flange Plain
Cat No.
JSF-1005



**Square Flange For
Concealed Stop Cock**
Cat No.
JSF-1006



Deep Katori Flange
Cat No.
JSF-1007



CP Brass Flange Touch
Cat No.
JSF-1008



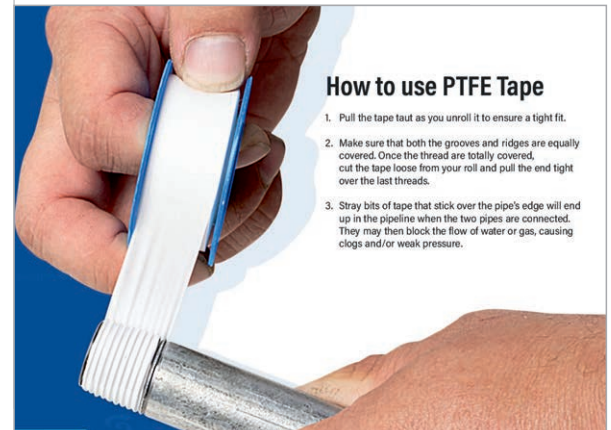
CP Display Flange
Cat No.
JSF-1009



Taflo Tape 12 Mtr.
Cat No.
JTT-1001



Taflo Tape 10 Mtr.
Cat No.
JTT-1002



How to use PTFE Tape

1. Pull the tape taut as you unroll it to ensure a tight fit.
2. Make sure that both the grooves and ridges are equally covered. Once the thread are totally covered, cut the tape loose from your roll and pull the end tight over the last threads.
3. Stray bits of tape that stick over the pipe's edge will end up in the pipeline when the two pipes are connected. They may then block the flow of water or gas, causing clogs and/or weak pressure.